

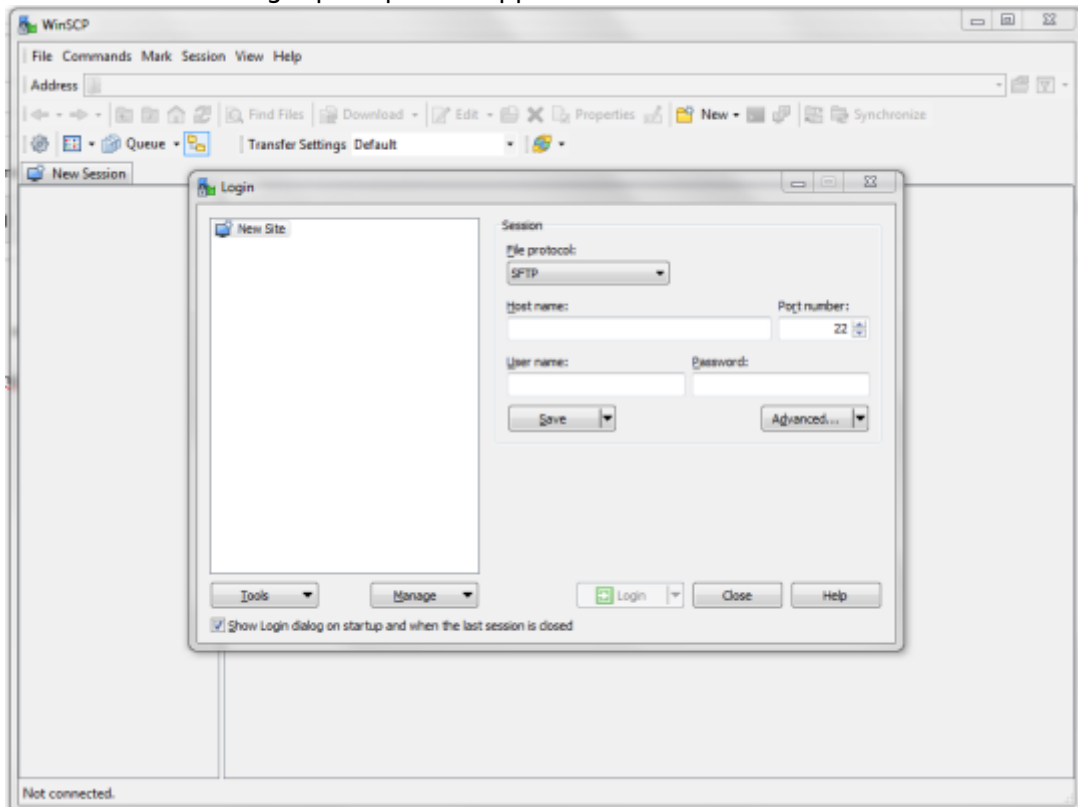
WinSCP


This is a quick guide on how to use WinSCP to transfer files over the network to a Batocera machine from a Windows computer.

1. Download and install [WinSCP](#). It is recommended to use the “Explorer Interface” by default.

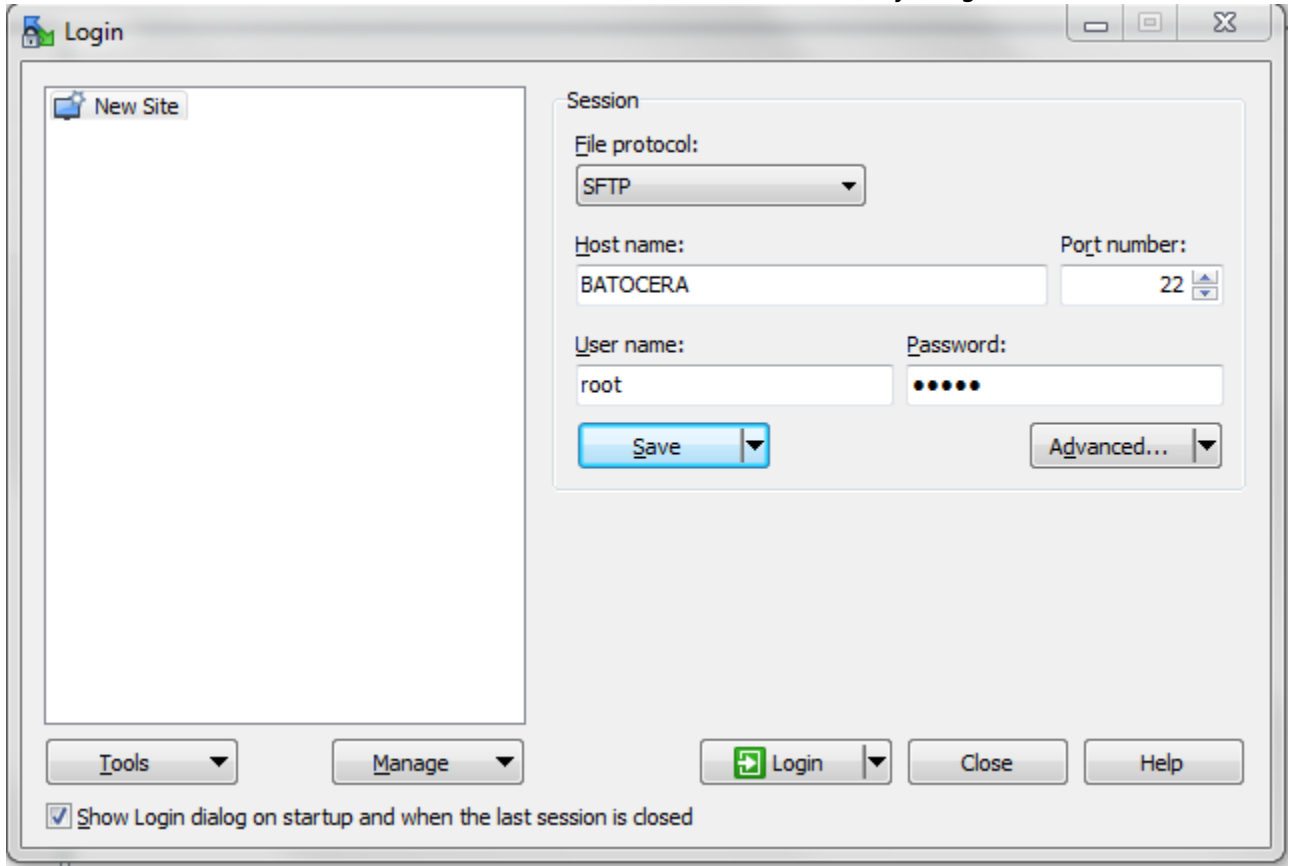


2. Click on **New Site** in the login prompt that appears.

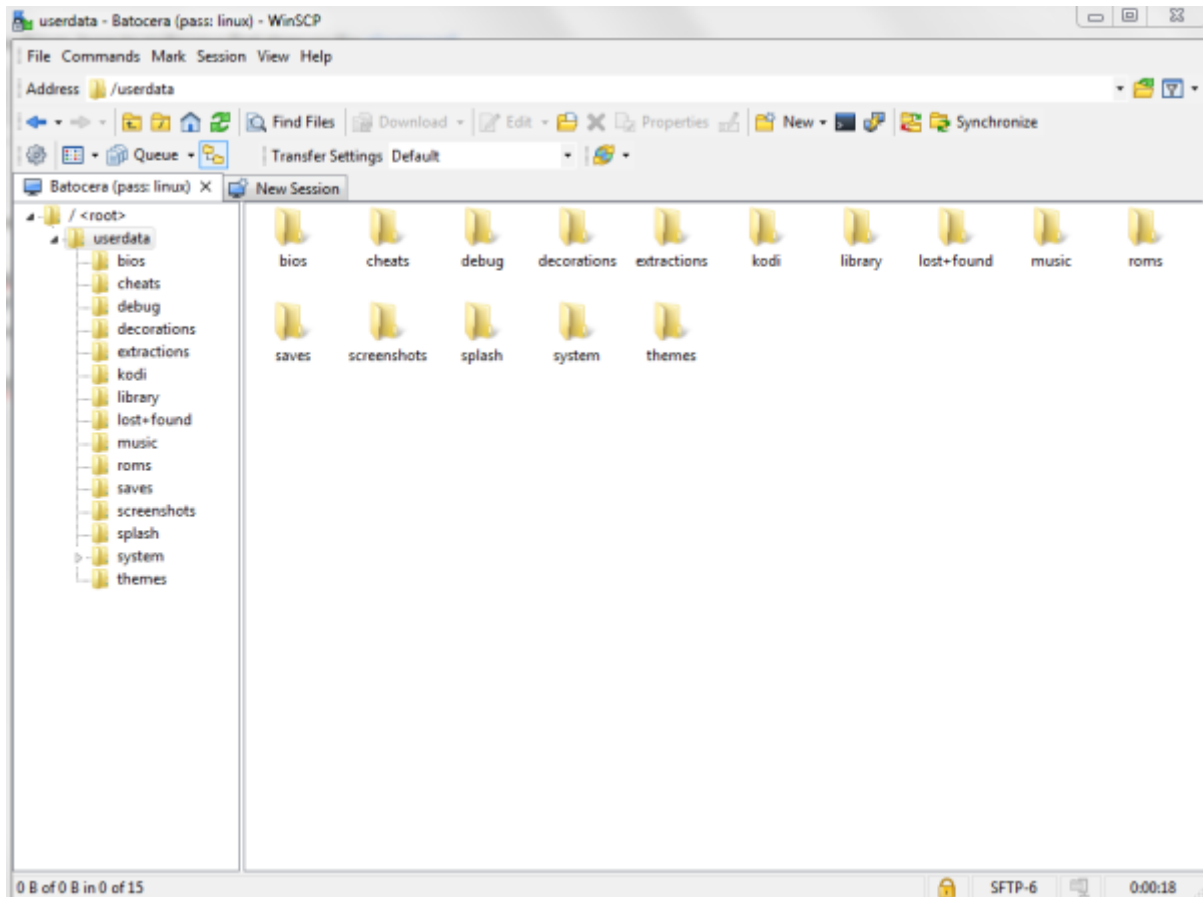


 If you have already set up PuTTY, then you'll be asked to import your logins from there. Go ahead and do that instead to save some time.

3. Enter the appropriate details to login to the Batocera machine. By default, **Host name:** BATOCCERA, **User name:** root and **Password:** linux. Leave everything else at its default.



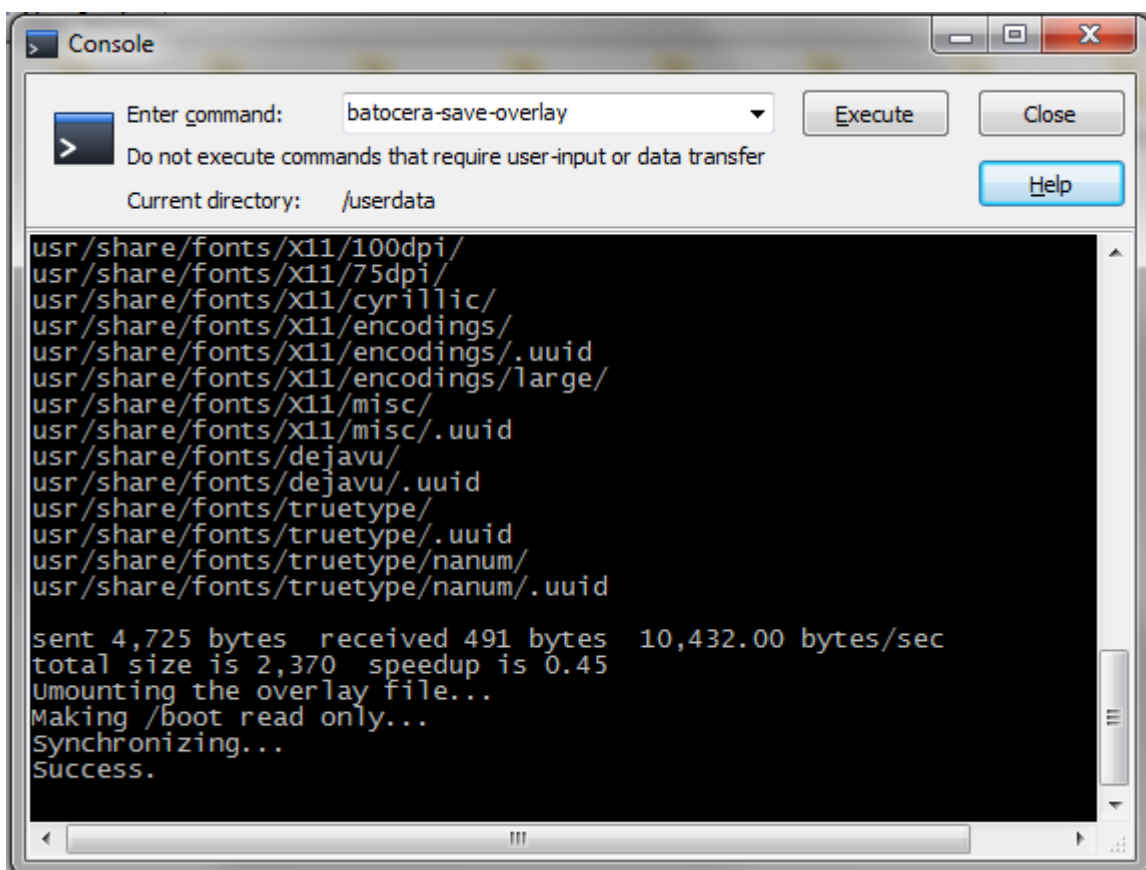
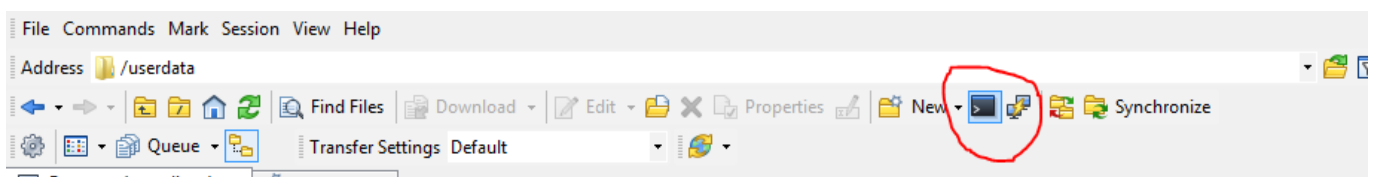
4. Click **Save**, **OK** and login.



Unlike [the normal Batocera network share](#), WinSCP allows for access to the root directory, providing access to the system files. Be careful when editing these, as changes can cause problems with Batocera's functionality. To make changes to the files outside of the /userdata/ directory permanent, run `batocera-save-overlay` in the terminal. For details on using the terminal, read below:

Forget PuTTY, WinSCP is my best friend now

WinSCP can also execute commands on the Batocera machine. Just click the console button in the toolbar at the top:



The WinSCP console is a very simple interface, only really useful for entering single-line command sequences. For a proper SSH client, use [PuTTY](#) instead.



For further SSH commands, visit [the SSH page](#).

Troubleshooting

Check out [the relevant section on the troubleshooting page](#).

From:

<https://www.wiki.batocera.org/> - **Batocera.linux - Wiki**

Permanent link:

<https://www.wiki.batocera.org/winscp>

Last update: **2023/03/14 07:07**

