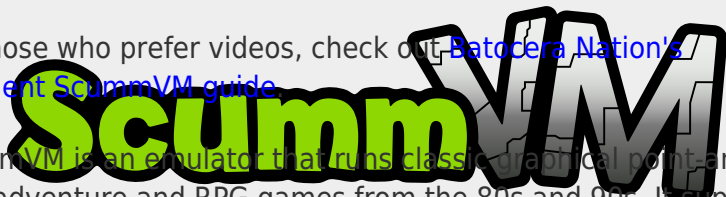


ScummVM



For those who prefer videos, check out [Batocera Nation's excellent ScummVM guide](#).



ScummVM is an emulator that runs classic graphical point-and-click adventure and RPG games from the 80s and 90s. It supports over two-hundred games with many classics from LucasArts, Sierra On-Line, Cyan or Westwood Studios.

Notable ResidualVM games (modern Lucas Arts games) include Escape from Monkey Island, Grim Fandango, Myst III: Exile and The Longest Journey. Notable AGS titles include Heroine's Quest, Resonance, Gemini Rue, The Apprentice I and II.

ScummVM emulates the engine, but requires the game's data files to function.

This system scrapes metadata for the "pc" group(s) and loads the scummvm set from the currently selected theme, if available.

Quick reference

- **Accepted ROM formats:** .scummvm, .squashfs
- **Folder:** /userdata/roms/scummvm

Emulators
ScummVM
libretro: ScummVM

BIOS

No ScummVM emulator in Batocera needs a BIOS file to run.

Game files

A list of freeware games and where to buy commercial games can be found at https://wiki.scummvm.org/index.php/Where_to_get_the_games (and for Steam games specifically https://store.steampowered.com/search/?sort_by=_ASC&term=scummvm).

Batocera Nation has kindly pre-configured some of the freeware games to allow for easy drag-and-drop installation: <https://www.batoceration.com/downloads/> (scroll down to "10 Freeware Games for ScummVM"). These can be used as examples to see how things are setup in case any of the following is confusing.

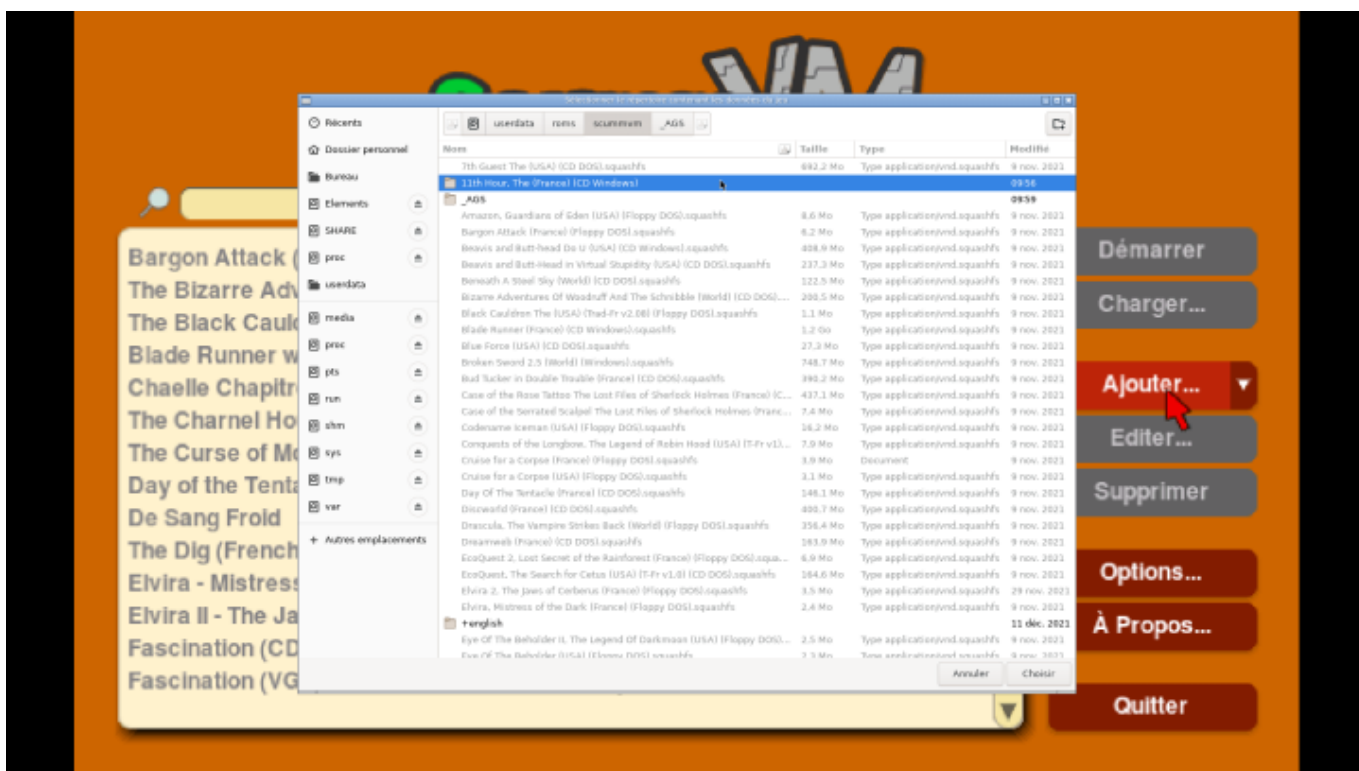


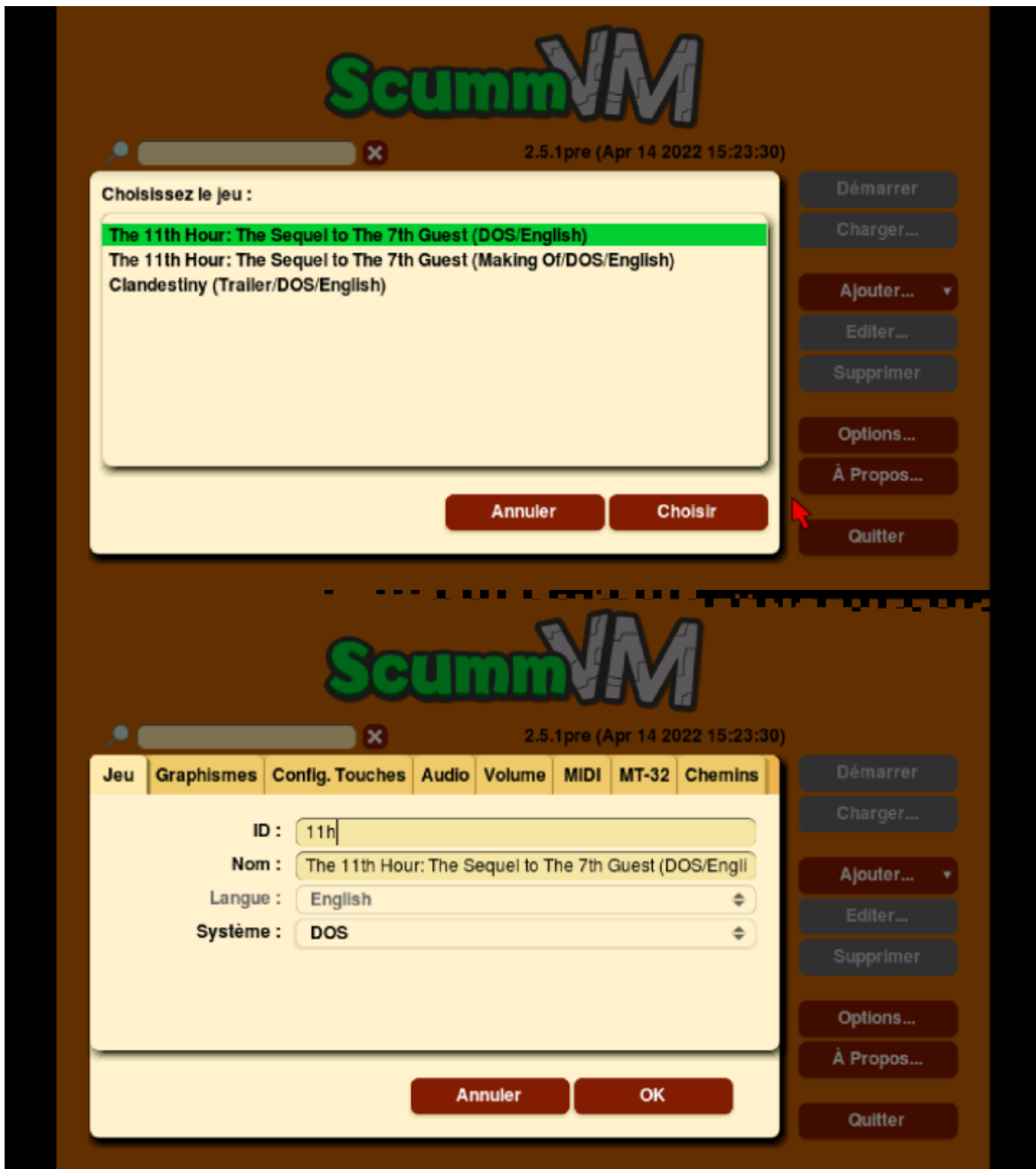
Since ScummVM games require their own folder, setting the folder display setting in **USER INTERFACE SETTINGS** to **HAVING MULTIPLE GAMES** or **NONE** will prevent redundant menu navigation.

For standalone


Create a directory per game in /userdata/roms/scummvm/. For this example, we will use the game files for The Day of the Tentacle. The game files will need to be put in the directory /userdata/roms/scummvm/Day_of_the_Tentacle/. Then, in this game data directory, a blank file named <codename>.scummvm needs of the game, like tentacle.scummvm. This file can contain run commands if desired, or just be completely empty.

To find out the codename of the game, open up scummvm from the Applications menu ([F1] on the system list) and load the game, the ID will be provided. For example, with the game The 11th Hour: The Sequel to The 7th Quest (DOS/English):





Here, the codename is 11h.

 Mass add to add all the games at once!


After the game been added on ScummVM it's possible to edit the codename. It's a good way to setup the launcher for [different languages](#) for AGS games.









 Commercial games might need additional files copied over, ScummVM will tell you what's missing if it fails to find them upon launching the game. If it doubt, copy over the entire contents of the commercial game's folder as-is into `roms/scummvm/<game>/`.

Note: All settings are stored into `scummvm.ini` config file, if you want to backup, migrate or sync it to another device, just backup or restore this file.

- Path location:
 - Batocera: `/userdata/bios/scummvm.ini`
 - Windows: `%APPDATA%\ScummVM\scummvm.ini`
 - For Windows 95/98/ME, the file is at `C:\WINDOWS\scummvm.ini`
 - MacOS: `~/Library/Preferences/ScummVM Preferences/scummvm.ini`
 - If an earlier version of ScummVM was installed on your system, the configuration file remains in the previous default location of `~/scummvmrc`
 - Linux: `~/config/scummvm/scummvm.ini`
 - If ScummVM was installed using Snap, the configuration file is found at `~/snap/scummvm/current/.config/scummvm/scummvm.ini`
 - If ScummVM was installed using Flatpak, the configuration file is found at ... [update later]
 - Other platforms normally at path to: `ScummVM/scummvm.ini`
 - All paths here: [ScummVM Documentation](#)

- Find or Edit the config location path at:



For libretro: ScummVM

Create a directory per game in `/userdata/roms/scummvm/`. For example, let's imagine you own the data file from the Day of the Tentacle, in that case, just put all the files in a directory `/userdata/roms/scummvm/Day_of_the_Tentacle/`. Then, in this game data directory, you need to create a file with the **codename** of the game, like `tentacle.scummvm`. This file can just be empty.

To find out the codename, [SSH](#) into Batocera and run `/usr/bin/scummvm --detect --path="/userdata/roms/scummvm/<game>".`

None of that works for me!

Alternatively, [SSH](#) into Batocera and run `/usr/bin/scummvm --list-games | >> /userdata/system/codename.txt` to list *all* the game titles and search for your game in the resulting `/userdata/system/codename.txt` file.

Game titles and their codenames are also provided on [the compatibility page from the main ScummVM website](#) (AGS games specifically are [on their wiki](#), as well as [fangames](#)). If you *still* can't find the game ID for your game, then look up the `detection_tables.h` file for the specific group of games directly from the repository: <https://github.com/scummvm/scummvm/tree/master/engines> (for

instance, AGS games are in the `ags/detection_tables.h` file).

MIDI ROMs

If you wish to use MIDI ROMs (for example the MT-32 synth), put the files in `/userdata/roms/scummvm/extras`

Emulators

ScummVM

The standalone engine. Good for playing the more modern and complex titles.

ScummVM configuration



A mouse and keyboard is required.

Standardized features available to all cores of this emulator: `scummvm.videomode`, `scummvm.ratio`, `scummvm.padtokeyboard`

To configure ScummVM, open up `scummvm` from the Applications menu (`[F1]` on the system list).

Enable Subtitles and Speech

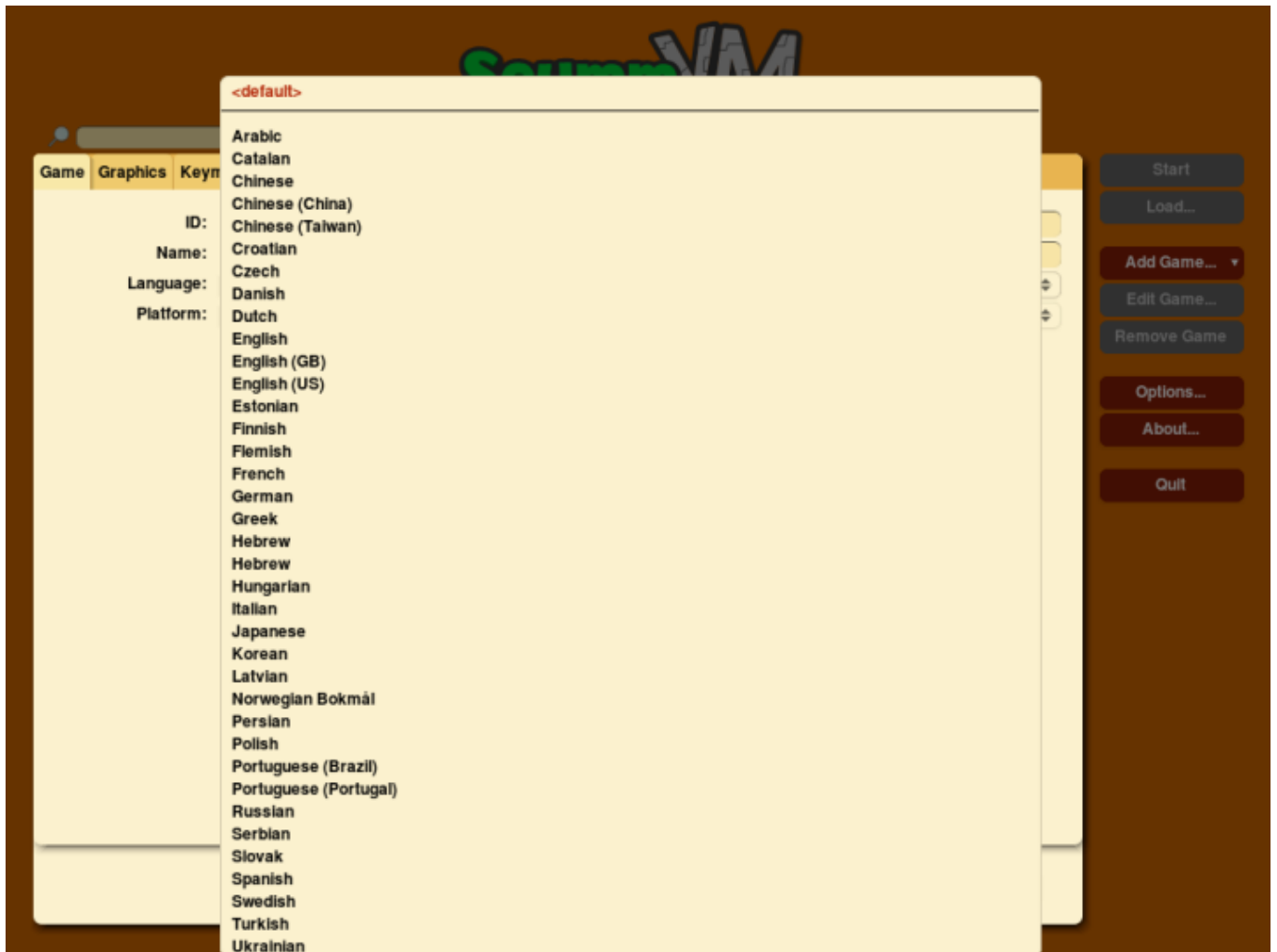
Go to **Audio** and select **Both** in the **Text and speech** option:



Change Language

Open up scummvm from the Applications menu ([F1] on the system list) and load the game.

Select the game's language in **GAME → LANGUAGE** or **ENGINE → GAME LANGUAGE**:





RetroArch

RetroArch has [its own page](#).

libretro: ScummVM

A libretro port of the engine. Good for playing the classic titles.


libretro: ScummVM configuration

ES setting name batocera.conf_key	Description ⇒ ES option key_value
ANALOG DEADZONE global.scummvm_analog_deadzone	Used to eliminate cursor drift/unwanted input ⇒ 15% 15, 20% 20, 25% 25, 30% 30, 0% 0, 5% 5, 10% 10.
GAMEPAD CURSOR SPEED global.scummvm_gamepad_cursor_speed	For high definition (640x480) games set this to 2.0 ⇒ 1.0 1.0, 1.5 1.5, 2.0 2.0, 2.5 2.5, 3.0 3.0, 0.25 0.25, 0.5 0.5, 0.75 0.75.

ES setting name <code>batocera.conf_key</code>	Description ⇒ ES option <code>key_value</code>
SPEED HACK (SAFE) <code>global.scummvm_speed_hack</code>	Reduces the CPU requirements for low power hardware ⇒ Off disabled, On enabled.

Controls

Most of the games are point-and-click games designed to be played with a mouse. If you don't have a mouse, the left analog stick can be used too.

Most games should have their controls automatically configure, but some do not. Manual controls can be configured by adding a `pad2key` profile for the game. Access the **GAME MENU** by holding down  while selecting your game → **CREATE PAD TO KEYBOARD CONFIGURATION**.

While in-game, you can press [R1] to open the ScummVM menu, which enables you to quit.

Here are the default ScummVM's controls shown on a [Batocera Retropad](#):



Troubleshooting

My game isn't launching (standalone)

On certain hardware configurations, ScummVM has difficulties with the **HEADS UP DISPLAY** option in **GAME SETTINGS**, try setting it to "NONE".

Make sure you have at least one physical gamepad connected and configured, even if you aren't intending on using it for that game.

The game isn't in my language/is in English

The same game could provide it to be launched in a specific language, just create a new launcher or edit it according to the languages supported by the game:

- `sword25.scummvm` or `sword25-us.scummvm` for English
- `sword25-hr.scummvm` for Croatian
- `sword25-fr.scummvm` for French
- `sword25-de.scummvm` for German
- `sword25-it.scummvm` for Italy
- `sword25-pl.scummvm` for Polish

- sword25-br.scummvm for Brazilian Portuguese
- sword25-ru.scummvm for Russian
- sword25-es.scummvm for Spanish



The alternate language for the game may need to be added in the [standalone configuration described above](#) for the new launcher to work.

I've put the codename in for my game but it's failing to launch

It's the launch file that needs to be `tentacle.scummvm`, **not the directory** that contains the game files.

If that's not it, some games could have different versions, you can specify it with (or a combination of):

- `<codename>.scummvm` for Floppy or DOS
- `<codename>-cd.scummvm` or `gameidcd.scummvm` for CD
- `<codename>-win.scummvm` or `gameidwin.scummvm` for Windows
- `<codename>-amiga.scummvm` for Amiga
- `<codename>-fm.scummvm` for FM-Towns
- `<codename>-v2.scummvm` for Version 2
- `<codename>vga.scummvm` or `gameid-vga.scummvm` for VGA
- `<codename>-ega.scummvm` for EGA
- `<codename>sci.scummvm` for SCI
- `<codename>agdi.scummvm` for AGDI
- `<codename>-demo.scummvm` for DEMO
- `<codename>deluxe.scummvm` for DELUXE
- `<codename>-steam.scummvm` for STEAM
- `<codename>-win-cd-us.scummvm` for Windows, CD and US

Further troubleshooting

[ScummVM's wiki](#) contains a wealth more information. ScummVM's documentation is available on their

[docs website](#), and further info on [their Github dev website](#).

For further troubleshooting, refer to the [generic support pages](#).

From:

<https://www.wiki.batocera.org/> - **Batocera.linux - Wiki**

Permanent link:

<https://www.wiki.batocera.org/systems:scummvm?rev=1679357975>

Last update: **2023/03/21 00:19**

