

ScummVM

ScummVM is a program that runs classic graphical point-and-click adventure and RPG games from the 80s and 90s. It supports over two-hundred games with many classics from LucasArts, Sierra On-Line, Cyan or Westwood Studios.



Notable ResidualVM games (modern Lucas Arts games) include Escape from Monkey Island, Grim Fandango, Myst III: Exile and The Longest Journey. Notable AGS titles include Heroine's Quest, Resonance, Gemini Rue, The Apprentice I and II.

ScummVM requires the game's data files to function.

This system scrapes metadata for the "pc" group(s) and loads the scummvm set from the currently selected theme, if available.

Quick reference

- **Emulator:** [ScummVM](#); [libretro: ScummVM](#)
- **Folder:** /userdata/roms/scummvm
- **Savegames:** /userdata/saves/scummvm
- **Accepted ROM formats:** .scummvm, .squashfs

BIOS

No ScummVM emulator in Batocera needs a BIOS file to run. For Roland MT-32 emulation indeed some files are needed. Please refer to [Roland MT-32](#) section

Game files

A list of freeware games and where to buy commercial games can be found at [ScummVM FAQ](#) and specifically for [Steam games](#) search the store.



Since ScummVM games require their own folder, setting the folder display setting in **USER INTERFACE SETTINGS** to **HAVING MULTIPLE GAMES** or **NONE** will prevent redundant menu navigation.

Setup games

Since **Batocera v42** it is easier than ever to setup the ScummVM. In the first example we explain the [general setup](#) that will generally work in older versions and is a solid setup. Later the [autodetection](#) and the specific setup by using the [GameID or EngineID](#) (for example language) is explained.

As the ultimate setup, there is a [small script](#) available. This will create the correct GameID within the auto created scummvm-file. The script will not work if there is a scummvm-file already in the game directory or if the GameID is already inside the scummvm.ini file - read more about installation and the usage [here](#).

Be aware that a kind of prioritizing takes place. Highest priority is **file content**, after that the **filename**, then the **autodetection** takes place. If you enter a false GameID as file content this has highest priority - please take care about this.

General Setup

Create a directory per game in /userdata/roms/scummvm/. For this example, we will use the game files for **The Day of the Tentacle**. The game files will need to be put in the directory /userdata/roms/scummvm/Day_of_the_Tentacle/. Then, in this game data directory, a blank file named <GameID>.scummvm needs of the game, like tentacle.scummvm. Now you can even pack this directory to squashfs-file and run it from there.

GameID or EngineID

Please refer to [Detect GameID section](#) to get instructions how to obtain the proper IDs from your ScummVM games. Create a directory per game in /userdata/roms/scummvm/. For this example, we will use the game files for **The Day of the Tentacle**. The game files will need to be put in the directory /userdata/roms/scummvm/Day_of_the_Tentacle/. Now create a game file like Day of the Tentacle.scummvm and inside the file put the content tentacle for it's GameID. This methods needs at least Batocera v42.

Autodetection

Create a directory per game in /userdata/roms/scummvm/. For this example, we will use the game files for **The Day of the Tentacle**. The game files will need to be put in the directory /userdata/roms/scummvm/Day_of_the_Tentacle/. Now create a game file like Day of the Tentacle.scummvm. As there is no valid GameID detectable the autodetection is activated and ScummVM tries to autodetect the correct GameID. This is by far the most convinient way but at least needs Batocera v42. This feature also enables squashfs-files that there is no need in containing any additional scummvm-file inside the archive.

Attention: Autodetection displays a list of games from the current or specified directory and starts the **first game** in the list. This is usually the english version of a game.

Use Setup Script

You can use a [small script](#) to setup everything for you. Be aware that the script will exit if there is a

scummvm-file already present in the specific game folder. If you already started the setup and the `scummvm.ini` contains already the GameID for your game then the script will refuse to create the start file. So best practise is to start from a clean setup. Means, you remove old scummvm-files and delete the `scummvm.ini`

Usage:

```
./scummvm-addgames-v2.sh <gamefolder> {auto|standalone|libretro|random|ma-random}
```

- auto/standalone use `scummvm.ini` location of the standalone core and write GameID there
- libretro use `scummvm.ini` location of the libretro core and write GameID there
- random use `/tmp/scummvm_<RND#>.ini` to write GameID within. It's basically a new file that can be copied over.
- ma-random use `/tmp/scummvm_<RND#>.ini` to write GameID within. As long as the file `/tmp/scummvm.identifier` is found all data is written into the same file. This is ideal if you use a script to mass add games to a new created ini-file.

Download the script from [here](#) and put it inside `/userdata/roms/scummvm`. Make it executable with `chmod +x scummvm-addgames-v2.sh` or use interpreter `bash scummvm-addgames-v2.sh`.

You can wrap a small script around this to autocreate all files needed for your games. Thanks to knulli for the script, I made some small modifications around that.

Here is a small example how to use the script to mass add games and to proper create scummvm-files. Please improve the scripts to make it work for you and share with the community. Me (crcerror aka cyperghost) has a real life ... so please see this as a scripting example.

```
#!/bin/bash
# Error Codes:
# 0 - everything went okay
# 1 - general error (missing parameters, wrong parameter
# 11 - game folder does not exist
# 12 - game folder is empty
# 13 - scummvm file found in gamedir
# 15 - scummvm.ini already contains GameID
# So it's up to YOU to handle this, please delete
/tmp/scummvm.identifier afteryou used ma-random parameter for mass adding

readarray -t array <<(find . -mindepth 1 -maxdepth 1 -name "*" -type d)
for i in "${array[@]}"; do
    bash scummvm-addgames-v2.sh "$i" ma-random
done
rm /tmp/scummvm.identifier
```

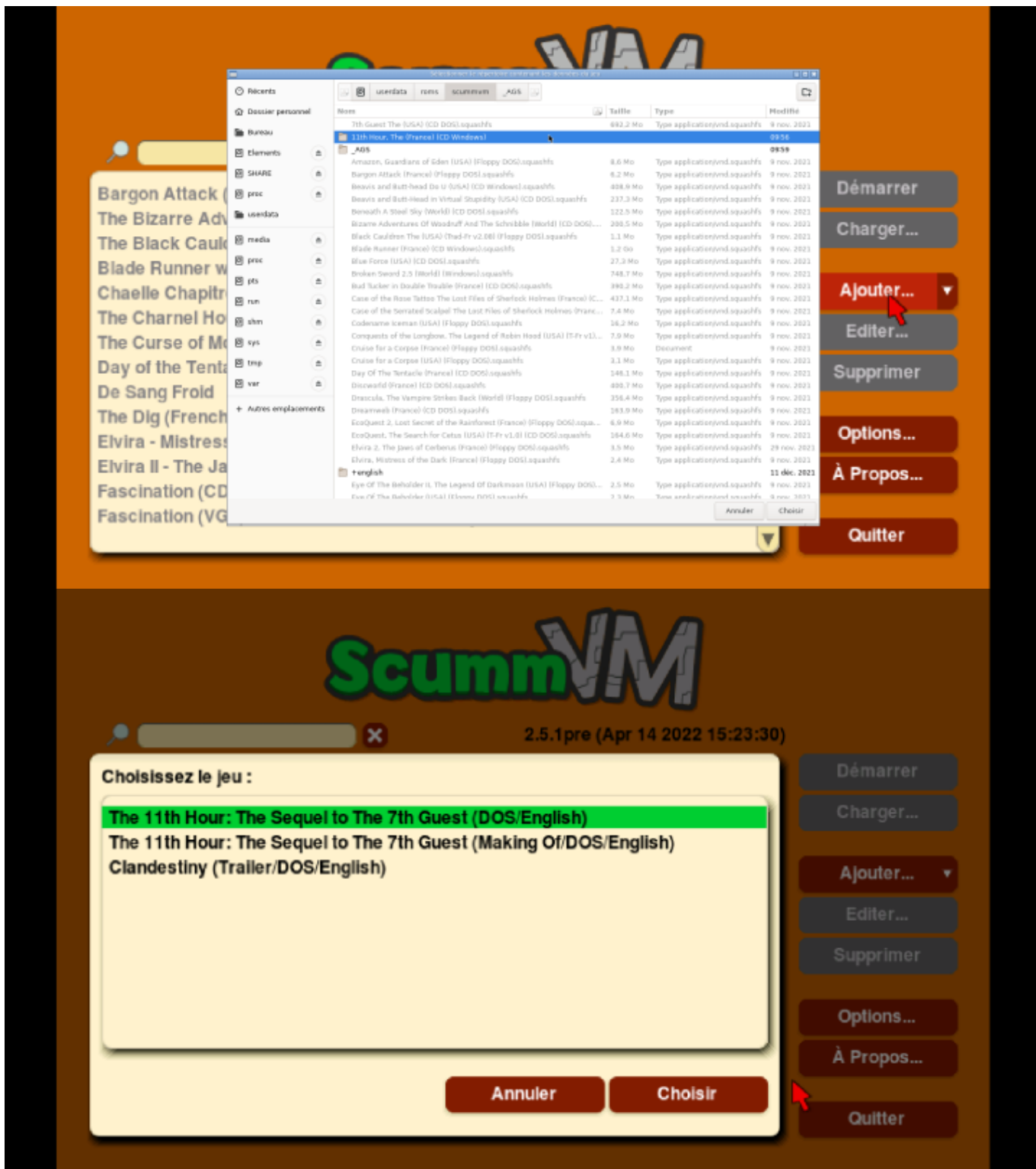
Detect GameIDs

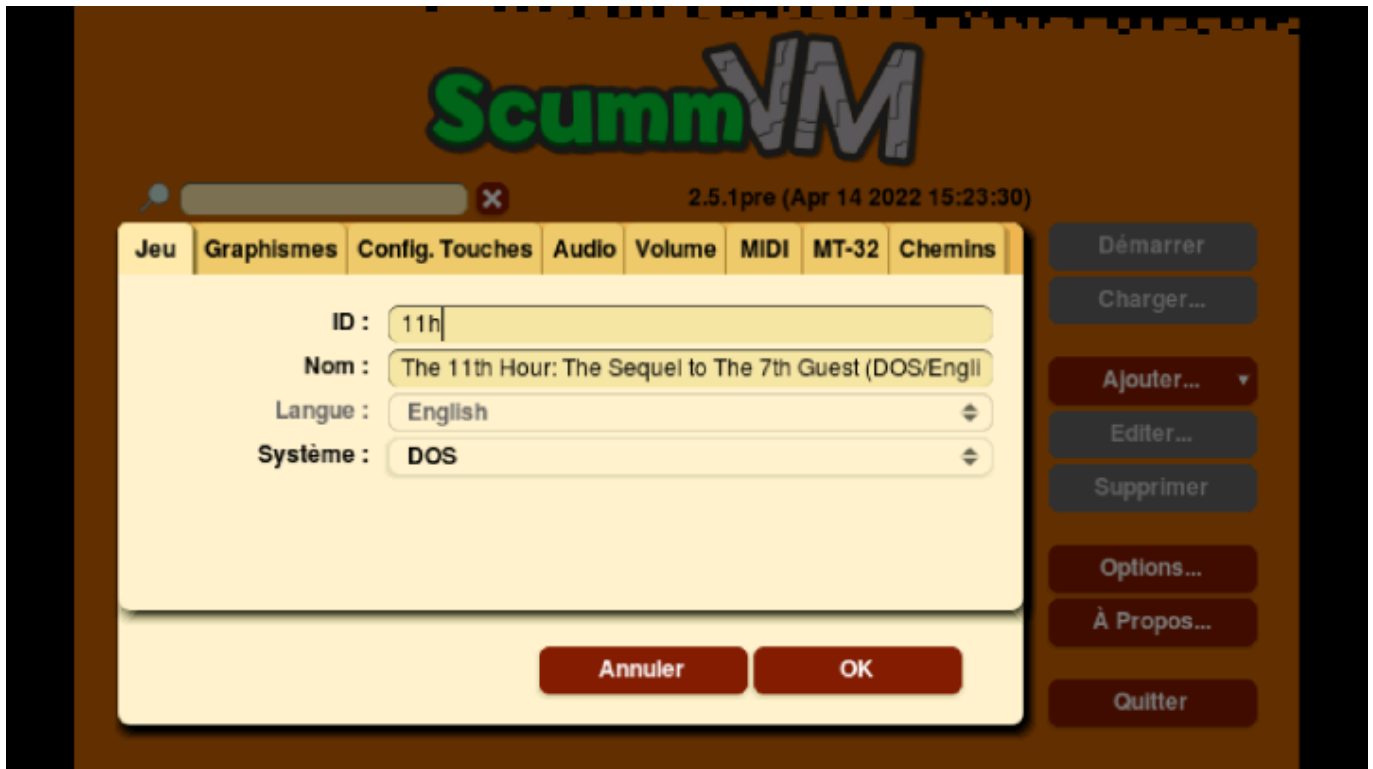
GameIDs are needed to setup a game for a specific language or to use special features that are included inside the game. That means CD specials like *talkie versions*. The EngineID can be more described as the base game features without langue string. That means, english language is default for multi language games. For example EngineID is gob3 only, whereas GameID is gob3-f r



The GameIDs need to be setted inside the `scummvm.ini` file. It is a bit unfortun, that the location of the ini file is different between the both cores. Read more about the [Differences in the cores](#) in this wonderfull instruction. So if you want to setup both cores then copy the ready setted `scummvm.ini` from one core to to another.

To find out the GameID of the game, open up `scummvm` from the Applications menu ([F1] on the system list) and load the game, the ID will be provided. For example, with the game `The 11th Hour: The Sequel to The 7th Quest (DOS/English)`:





Here, the EngineID is 11h.



Use `/usr/bin/scummvm --add --recursive --path=/userdata/roms/scummvm --config=~/.configs/scummvm/scummvm.ini` to mass add all the games at once to the ScummVM Launcher! This is important, otherwise ScummVM does not recognize how to start a game if you use a filename based setup like `sword25 - fr . scummvm` for example.


After the game been added on ScummVM it's possible to edit the EngineID. It's a good way to setup the launcher for [different languages](#) for AGS games.







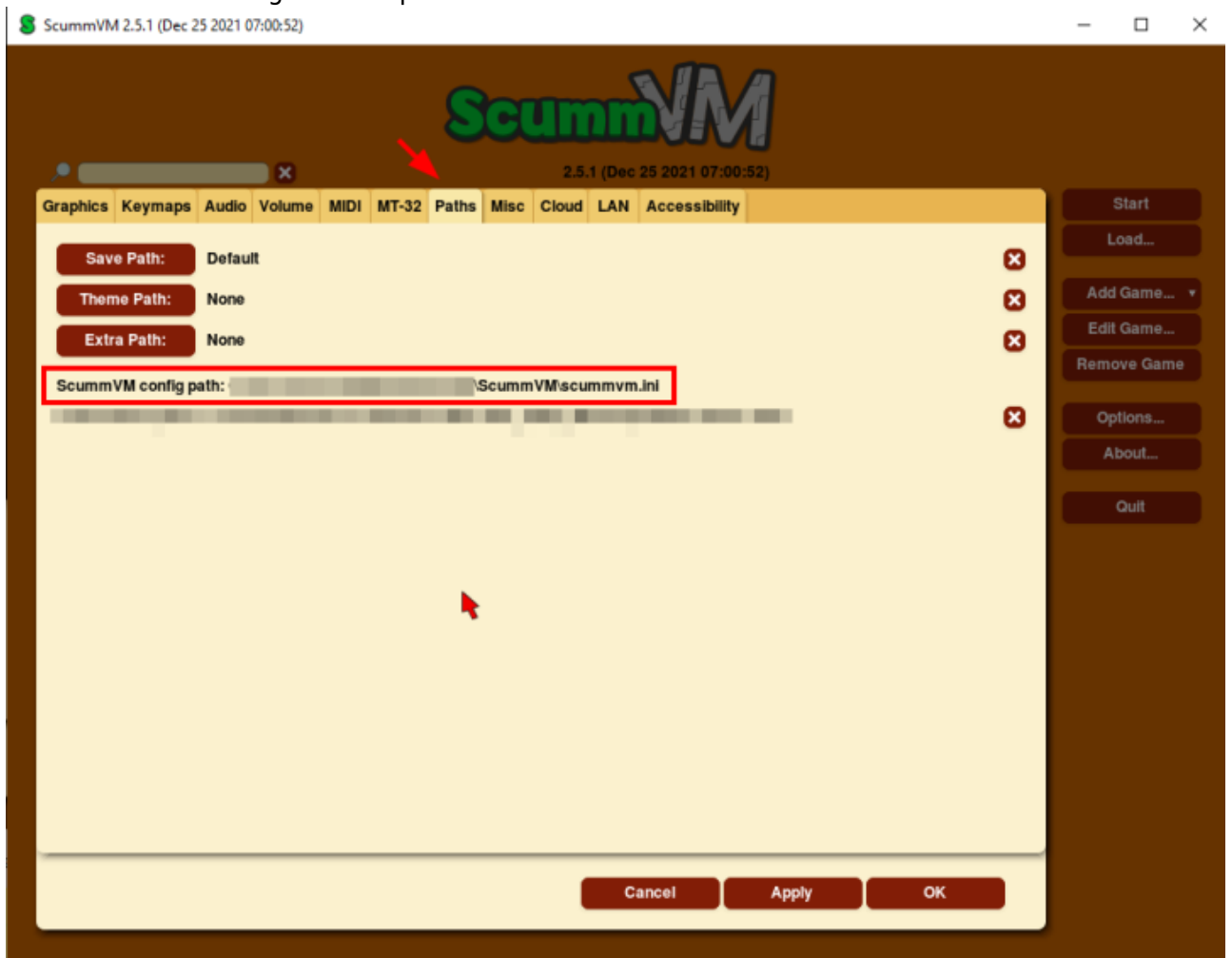


 Commercial games might need additional files copied over, ScummVM will tell you what's missing if it fails to find them upon launching the game. If it doubt, copy over the entire contents of the commercial game's folder as-is into `roms/scummvm/<game>/`.

Note: All settings are stored into `scummvm.ini` config file, if you want to backup, migrate or sync it to another device, just backup or restore this file.

- Path location:
 - Batocera: `/userdata/bios/scummvm.ini`
 - Windows: `%APPDATA%\ScummVM\scummvm.ini`
 - For Windows 95/98/ME, the file is at `C:\WINDOWS\scummvm.ini`
 - MacOS: `~/Library/Preferences/ScummVM Preferences/scummvm.ini`
 - If an earlier version of ScummVM was installed on your system, the configuration file remains in the previous default location of `~/scummvmrc`
 - Linux: `~/config/scummvm/scummvm.ini`
 - If ScummVM was installed using Snap, the configuration file is found at `~/snap/scummvm/current/.config/scummvm/scummvm.ini`
 - If ScummVM was installed using Flatpak, the configuration file is found at ... [update later]
 - Other platforms normally at path to: `ScummVM/scummvm.ini`
 - All paths here: [ScummVM Documentation](#)

- Find or Edit the config location path at:



Core Differences

Since Batocera v42 both cores work quite similarly. They share the same savegame location, both cores use autodetection if no GameID is setted from filename or file content. Let us now talk about the differences:

1. Location of `scummvm.ini`
 1. Standalone ScummVM: `/userdata/system/config/scummvm/scummvm.ini`
 2. Libretro ScummVM: `/userdata/bios/scummvm.ini`
2. Handling of GameID as filename
 1. Standalone ScummVM: Handles a GameID from file content and filename
 2. Libretro ScummVM: Handles a GameID only from file content, EngineID from filename
3. Different versions:
 1. Refer to core and its version info. Usually the version number differs not so much, so libretro and standalone cores are almost compatible
4. Language Setup
 1. Standalone ScummVM: Use the GameID, setted from file content and filename or use EmulationStation Frontend to define the specific language
 2. Libretro ScummVM: Language can only be setted by proper GameID - there is no option in ES available

I made best experience to setup one core completely and then copy the setupd `scummvm.ini` to the

second core location. Also using symlinks works.

None of that works for me!

First be aware that prioritizing takes place. Highest priority is **file content**, after that the **filename**, then the **autodetection** takes place. So if you made a mistake here, ScummVM will fail to launch - check first the logs in `\userdata\system\logs` for errors.

Alternatively, [SSH](#) into Batocera and run `/usr/bin/scummvm --list-games >> /userdata/system/engineid.txt` to list *all* the game titles and search for your game in the resulting `/userdata/system/engineid.txt` file.

Game titles and their EngineIDs are also provided on [the compatibility page from the main ScummVM website](#) (AGS games specifically are [on their wiki](#), as well as [fangames](#)). If you *still* can't find the game ID for your game, then look up the `detection_tables.h` file for the specific group of games directly from the repository: <https://github.com/scummvm/scummvm/tree/master/engines> (for instance, AGS games are in the `ags/detection_tables.h` file).

MIDI ROMs / Roland MT-32 music

Some of the engines provided by ScummVM support Roland MT-32 midi music. However, unlike other soundcard emulators like AdLib or CMS, Roland MT-32 music requires some additional files that need to be provided separately.

If you want to use Roland MT-32 music in your ScummVM games, you will have to provide the required files yourself. Once you've sourced the files, put them in the bios folder of your userdata folder like this:

```
/bios
├─ scummvm/
│  └─ extra/
│     ├─ MT32_CONTROL.ROM
│     └─ MT32_PCM.ROM
```

Once you have added the files:

- Launch any ScummVM game.
- Press Start then Return to Launcher to get to the ScummVM launcher.
- From there go to Global Options.
- Go to the Audio tab.
- Set Preferred Device to MT-32 emulator.
- Quit ScummVM and re-launch the game.
- Enjoy the music.

Emulators

ScummVM

The standalone engine. Good for playing the more modern and complex titles.

ScummVM configuration



A mouse and keyboard is required.

Standardized features available to all cores of this emulator: `scummvm.videomode`, `scummvm.ratio`, `scummvm.padtkeyboard`

To configure ScummVM, open up `scummvm` from the Applications menu ([F1] on the system list).

Enable Subtitles and Speech

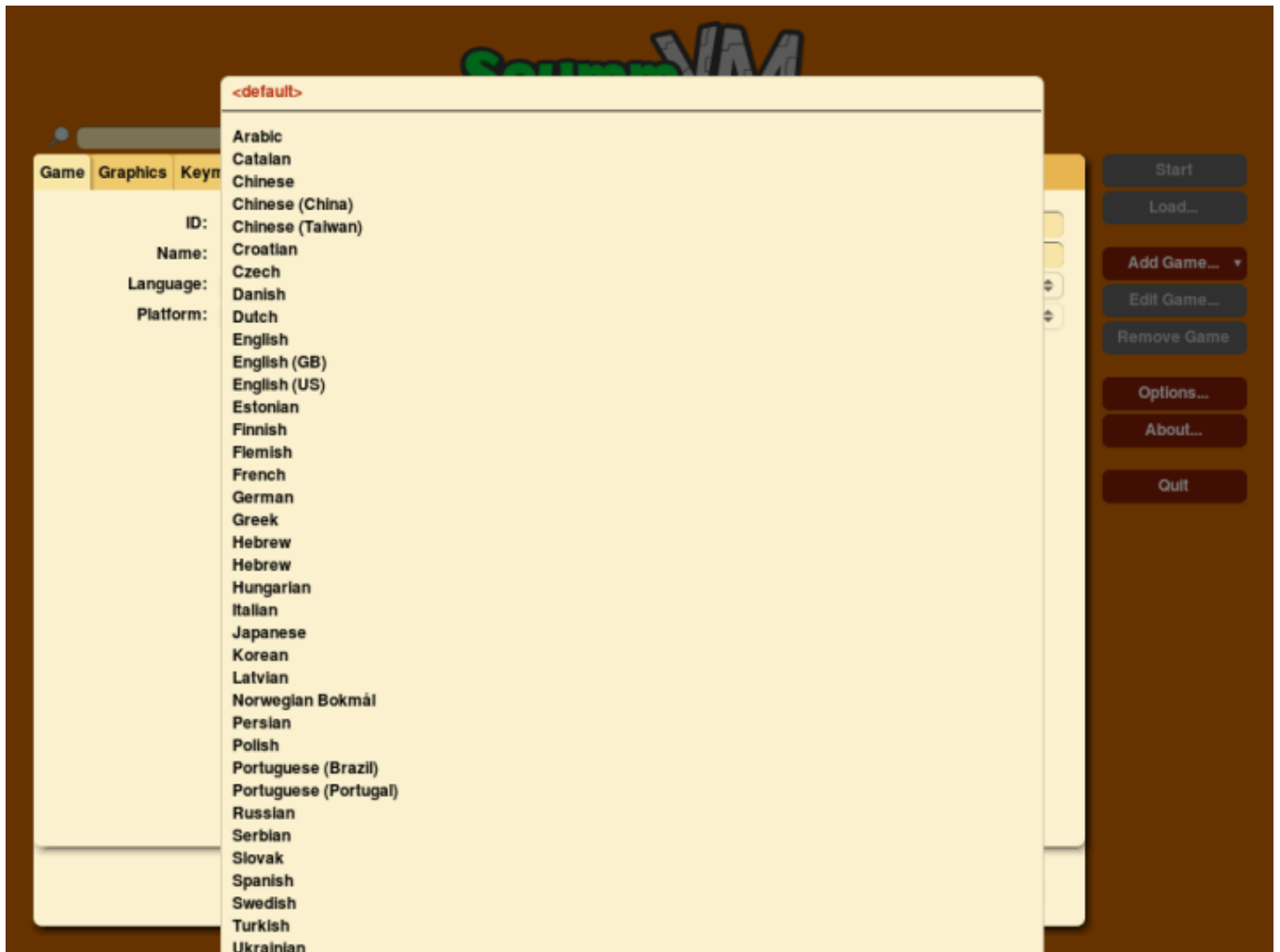
Go to **Audio** and select **Both** in the **Text and speech** option:



Change Language

Open up scummvm from the Applications menu ([F1] on the system list) and load the game.

Select the game's language in **GAME → LANGUAGE** or **ENGINE → GAME LANGUAGE**:





RetroArch

RetroArch has [its own page](#).

libretro: ScummVM

A libretro port of the engine. Good for playing the classic titles.


libretro: ScummVM configuration

ES setting name batocera.conf_key	Description ⇒ ES option key_value
ANALOG DEADZONE global.scummvm_analog_deadzone	Used to eliminate cursor drift/unwanted input ⇒ 15% 15, 20% 20, 25% 25, 30% 30, 0% 0, 5% 5, 10% 10.
GAMEPAD CURSOR SPEED global.scummvm_gamepad_cursor_speed	For high definition (640×480) games set this to 2.0 ⇒ 1.0 1.0, 1.5 1.5, 2.0 2.0, 2.5 2.5, 3.0 3.0, 0.25 0.25, 0.5 0.5, 0.75 0.75.

ES setting name batocera.conf_key	Description ⇒ ES option key_value
SPEED HACK (SAFE) global.scummvm_speed_hack	Reduces the CPU requirements for low power hardware ⇒ Off disabled, On enabled.

Controls

Most of the games are point-and-click games designed to be played with a mouse. If you don't have a mouse, the left analog stick can be used too.

Most games should have their controls automatically configure, but some do not. Manual controls can be configured by adding a pad2key profile for the game. Access the **GAME MENU** by holding down  while selecting your game → **CREATE PAD TO KEYBOARD CONFIGURATION**.

While in-game, you can press [R1] to open the ScummVM menu, which enables you to quit.

Here are the default ScummVM's controls shown on a [Batocera Retropad](#):



Troubleshooting

First be sure you added your game to the ScummVM-Player list. Most commands introduced later down, like language setting per filename, will not work without this.

My game isn't launching (standalone)

On certain hardware configurations, ScummVM has difficulties with the **HEADS UP DISPLAY** option in **GAME SETTINGS**, try setting it to "NONE".

Make sure you have at least one physical gamepad connected and configured, even if you aren't intending on using it for that game.

The game isn't in my language/is in English

The same game could provide it to be launched in a specific language, just create a new launcher or edit it according to the languages supported by the game:

- sword25.scummvm or sword25-us.scummvm for English
- sword25-hr.scummvm for Croatian
- sword25-fr.scummvm for French
- sword25-de.scummvm for German

- sword25-it.scummvm for Italy
- sword25-pl.scummvm for Polish
- sword25-br.scummvm for Brazilian Portuguese
- sword25-ru.scummvm for Russian
- sword25-es.scummvm for Spanish

I've put the EngineID in for my game but it's failing to launch

It's the launch file that needs to be `tentacle.scummvm`, **not the directory** that contains the game files.

If that's not it, some games could have different versions, you can specify it with (or a combination of):

- `<EngineID>.scummvm` for Floppy or DOS
- `<EngineID>-cd.scummvm` or `gameidcd.scummvm` for CD
- `<EngineID>-win.scummvm` or `<EngineID>win.scummvm` for Windows
- `<EngineID>-amiga.scummvm` for Amiga
- `<EngineID>-fm.scummvm` for FM-Towns
- `<EngineID>-v2.scummvm` for Version 2
- `<EngineID>-vga.scummvm` or `<EngineID>vga.scummvm` for VGA
- `<EngineID>-ega.scummvm` for EGA
- `<EngineID>-sci.scummvm` for SCI
- `<EngineID>-agdi.scummvm` for AGDI
- `<EngineID>-demo.scummvm` for DEMO
- `<EngineID>-deluxe.scummvm` for DELUXE
- `<EngineID>-steam.scummvm` for STEAM
- `<EngineID>-win-cd-us.scummvm` for Windows, CD and US

Further troubleshooting

[ScummVM's wiki](#) contains a wealth more information. ScummVM's documentation is available on their [docs website](#), and further info on [their Github dev website](#).

For further troubleshooting, refer to the [generic support pages](#).

From:

<https://wiki.batocera.org/> - **Batocera.linux - Wiki**

Permanent link:

<https://wiki.batocera.org/systems:scummvm>

Last update: **2025/05/17 03:33**

